



FILED 2020 APR 01 08:05

2020 APR -1 AM 8:05

COUNTY CLERK WOOD CO TX

**AMENDED ORDER OF DECLARATION OF LOCAL DISASTER DUE TO PUBLIC
HEALTH EMERGENCY FOR WOOD COUNTY, TEXAS**

Stay Home Stay Safe Order

DATE AMENDED ORDER ISSUED: APRIL 1, 2020

WHEREAS; Pursuant to Texas Government Code Section 418.108, Wood County Judge Lucy Hebron issued a Declaration of Local Disaster for Public Health Emergency on March 20, 2020, due to a novel coronavirus now designated SARS-CoV2 which causes the disease COVID-19; and,

WHEREAS, on March 20, 2020, Judge Hebron issued an Order in furtherance of her authority to protect the safety and welfare of the public by slowing the spread of the virus; and,

WHEREAS, the on-going evaluation of circumstances related to the virus and the updated recommendations of the Centers for Disease Control and the Texas Department of State Health Services warrant the March 20, 2020 Order of County Judge Lucy Hebron be amended; and,

WHEREAS, on March 16, 2020, President Trump acknowledged the gravity of the COVID-19 pandemic, releasing strict guidelines to limit people's interactions, including that Americans should avoid groups of more than 10 people; and,

WHEREAS, on March 24, 2020, the Wood County Commissioners Court issued an Order Ratifying the Disaster Declaration for Public Health Emergency that affirmed the activation of the Wood County Emergency Management Plan and extends the Declaration of Local Disaster until the Governor of the State of Texas terminates the Texas Disaster Declaration issued on March 13, 2020; and,

WHEREAS, on March 31, 2020, Governor Abbott issued an Executive Order, No. GA-14 relating to statewide continuity of essential services and activities during the COVID-19 disaster;

NOW THEREFORE, the March 20, 2020, Order of County Judge Lucy Hebron is hereby AMENDED as follows:

Summary: The virus that causes 2019 Coronavirus Disease (COVID-19) is easily transmitted through person to person contact, especially in group settings, and it is essential that the spread of the virus be slowed to protect the ability of public and private health care providers to handle the influx of new patients and safeguard public health and safety. Because of the risk of the rapid spread of the virus, and the need to protect the most vulnerable members of the community, this Amended Order requires all individuals anywhere in Wood County to stay at home – except for certain essential activities and work to provide essential business and government services or perform essential public infrastructure construction, including housing. This Amended Order takes effect at 11:59 p.m. on April 1, 2020 and will continue through to the date on which the

Governor terminates the Texas Disaster Declaration subject to any limited exceptions and under the terms and conditions more particularly set forth below.

**UNDER THE AUTHORITY OF TEXAS GOVERNMENT CODE SECTION 418.108,
WOOD COUNTY JUDGE LUCY HEBRON ORDERS:**

1. That this Amended Order under Declaration of Local State of Disaster Due to Public Health Emergency shall be given prompt and general publicity and filed with the County Clerk. This Amended Order incorporates all provisions provided in the previous Disaster Order issued on March 20, 2020 and ratified by the Wood County Commissioners Court on March 24, 2020.
2. That, regardless of any other provision of this Amended Order, if a person residing in Wood County is being tested or has tested positive for COVID-19 ("COVID-19 Patient") or is a Person Under Investigation ("PUI"), that person, plus all other individuals living at the same address¹ of a COVID-19 Patient or PUI are ordered to isolate at home until testing shows the COVID-19 Patient or PUI, has either (i) tested negative, (ii) is released back to work by a medical doctor, or (iii) is no longer an active PUI according to the Local Health Authority, whichever occurs first. Individuals identified in this paragraph shall not go to work, school, or any other community function until the COVID-19 Patient or PUI has either (i) tested negative, (ii) is released back to work by a medical doctor, or (iii) is no longer an active PUI according to the Local Health Authority, whichever occurs first. Nothing in this paragraph shall prevent any individual from seeking health care services or treatment for themselves or assisting any family member.
 - a. COVID-19 Patient includes an individual who (i) has tested positive or (ii) has been tested for COVID-19 and is still awaiting a result.
 - b. Person Under Investigation ("PUI") is defined as an individual who the local public health authority has reason to believe is or may be infected in accordance with Texas Health and Safety Code, Chapter 81, Subchapters D, E, and G, and has been informed that they are a "Person Under Investigation."
 - c. This provision of this Amended Order in no way impedes the local public health authority or state public health authority from issuing or seeking any Control Measure Order under Texas Health and Safety Code, Chapter 81, Subchapter E.
3. That all individuals currently living in Wood County, Texas, (the "County") are ordered to stay in their place of residence. To the extent individuals are using shared or outdoor spaces, they must at all times as reasonably possible maintain physical distancing of at least six feet from any other person when outside their residence. All persons may leave their residences only for Essential Activities, Essential Government Functions, or to operate Essential Businesses or Locked Businesses, as defined below. Individuals experiencing homelessness are exempt from this Section, but are strongly urged to obtain shelter, and entities are strongly urged to make such shelter available as soon as possible and to the maximum extent practicable and to utilize Social Distancing Requirements in their operations. Notwithstanding the foregoing, nothing in this order shall restrict the rights of any citizen of the County provided for by the Constitution of the United States or of the State of Texas.

¹ For apartment complexes or other multi-family units, the term "address" is intended only to mean those living in the same apartment number or housing unit.

4. That all businesses² with a facility in the County, except Essential Businesses or Locked Businesses as defined below, are required to cease all activities at facilities located within the County except Minimum Basic Operations, as defined below. For clarity, all businesses (regardless of whether they are an Essential Business or Locked Business or otherwise) may also continue operations consisting exclusively of employees or contractors performing activities at their own residences (i.e., working from home, teleworking, or telecommuting). All Essential Businesses are encouraged to determine essential staff necessary to operate and send all non-essential staff to their respective homes. To the greatest extent feasible, Essential Businesses and Locked Businesses shall comply with Social Distancing Requirements as defined below, including but not limited to when any customers are standing in line.
5. All public and private gatherings of any number of people occurring outside a household or living unit are prohibited, except for the limited purposes as expressly permitted in below. Nothing in this Amended Order prohibits the gathering of members of a household or living unit.
6. All travel, except Essential Travel and Essential Activities as defined below, is prohibited. People must use public transit only for purposes of performing Essential Activities, to travel to and from work to operate Essential Businesses or Locked Businesses, or to maintain Essential Governmental Functions. People riding on public transit must comply with Social Distancing Requirements as defined below, to the greatest extent feasible. This Amended Order allows travel into or out of the County to perform Essential Activities, operate Essential Businesses or Locked Businesses, or maintain Essential Governmental Functions.
7. Definitions and Exemptions.
 - a. **Essential Activities.** For purposes of this Amended Order, individuals may leave their residence only to perform any of the following "Essential Activities:"
 - i. To engage in activities or perform tasks essential to their health and safety, or to the health and safety of their family or household members (including, but not limited to, pets), such as, by way of example only and without limitation, obtaining medical supplies or medication, visiting a health care professional, or obtaining supplies they need to work from home;
 - ii. To obtain necessary services or supplies for themselves and their family or household members or to deliver those services or supplies to others, such as, by way of example only and without limitation food, dry goods, fresh fruits and vegetables, pet supply, fresh meats, fish, and poultry, and any other household consumer products and products necessary to maintain the safety, sanitation, and essential operation of residences;
 - iii. To engage in outdoor activity, provided the individuals comply with Social Distancing Requirements as defined below, such as, by way of example and without limitation, exercising, walking, hiking, running, or riding a bicycle;
 - iv. To perform work providing essential products and services at an Essential Business or Locked Business or to otherwise carry out activities

²For the purposes of this Order, covered businesses include any for-profit, or non-profit, regardless of the nature of the service the function they perform, or its corporate or entity structure.

- performed by “Essential Critical Infrastructure Workers”³ in support of Critical Infrastructure or as otherwise specifically permitted in this Amended Order, including Minimum Basic Operations; and
- v. To care for a family member or pet in another household.

NOTWITHSTANDING THE FOREGOING PERMITTED ACTIVITIES, PEOPLE AT HIGH RISK OF SEVERE ILLNESS FROM COVID-19 AND PEOPLE WHO ARE SICK ARE URGED TO STAY IN THEIR RESIDENCE TO THE EXTENT POSSIBLE, EXCEPT AS NECESSARY TO SEEK MEDICAL CARE.

- b. **Healthcare Operations.** For purposes of this Amended Order, individuals may leave their residence to work for or obtain services at any “Healthcare Operations.” The term “Healthcare Operations” includes the activities of hospitals, clinics, private practice physicians, dentists, chiropractors, pharmacies, pharmaceutical companies, and biotechnology companies, other healthcare providers, healthcare facilities, healthcare suppliers, home healthcare services providers, mental health providers, or any related and/or ancillary healthcare services. “Healthcare Operations” also includes veterinary care and all healthcare services provided to animals. This exemption shall be construed broadly to avoid any impacts to the delivery of healthcare, broadly defined. “Healthcare Operations” does not include fitness and exercise gyms and similar facilities.
- c. **Critical Infrastructure.** For purposes of this Amended Order, individuals may leave their residence to provide any goods or services or perform any work necessary to the operations and maintenance of “Critical Infrastructure,” as more particularly identified by the U.S. Department of Homeland Security, Cybersecurity & Infrastructure Security Agency (CISA) as the following 16 critical infrastructure sectors: (1) Chemical Sector, (2) Commercial Facilities Sector, (3) Communications Sector, (4) Critical manufacturing Sector, (5) Dams Sector, (6) Defense Industrial base Sector, (7) Emergency Services Sector, (8) Energy Sector, (9) Financial Services Sector, (10) Food and Agriculture Sector, (11) Government Facilities Sector, (12) Healthcare and Public Health Sector, (13) Information Technology Sector, (14) Nuclear Reactors, Materials, and Waste Sector, (15) Transportation Systems Sector, and (16) Water and Wastewater Systems Sector, provided that they carry out those services or they work in compliance with Social Distancing Requirements as defined below, to the extent possible. See <https://www.cisa.gov/identifying-critical-infrastructure-during-covid-19>.
- d. **Emergency Personnel, Law Enforcement, and the Judiciary.** Nothing in this Amended Order shall prohibit the activities of any first responder, emergency management personnel, emergency dispatcher, detention officer, court personnel, or law enforcement personnel.
- e. **Essential Governmental Functions.** Nothing in this Amended Order shall prohibit any individual from performing or accessing “Essential Governmental Functions,” as determined by the governmental entity performing those functions. Each governmental entity shall identify and designate appropriate employees or

³ For identification of workers who fit within the definition of “Essential Critical Infrastructure Workers,” see the guidance provided by the U.S. Department of Homeland Security, Cybersecurity & Infrastructure Security Agency (CISA) <https://www.cisa.gov/identifying-critical-infrastructure-during-covid-19>, which is incorporated by reference.

contractors to continue providing and carrying out any Essential Governmental Functions. All Essential Governmental Functions shall be performed in compliance with Social Distancing Requirements as defined in this Amended Order, to the extent possible.

- f. **Schools.** Nothing in this Amended Order shall restrict the school-related activities of any public, private, or charter school, or any homeschool association, including without limitation the delivery or pick-up of meals, supplies, or homework assignments.
- g. **Essential Businesses.** For the purposes of this Amended Order, the term "Essential Businesses" means:
 - i. Healthcare Operations;
 - ii. Businesses engaged in activities necessary for the operation, maintenance, or support of Critical Infrastructure through the use of Essential Critical Infrastructure Workers;
 - iii. Grocery stores, farmers' markets, farm and produce stands, supermarkets, food banks, convenience stores, and other establishments engaged in the retail sale of food, dry goods, fresh fruits and vegetables, pet supply, fresh meats, fish, and poultry, and any other household consumer products (such as cleaning and personal care products), and liquor stores. This includes stores that sell groceries and also sell other non-grocery products, and products necessary to maintaining the safety, sanitation, and essential operation of residences. This also includes facilities that provide warehouse and shipping services for the above mentioned products;
 - iv. Food cultivation, including farming, livestock, and fishing;
 - v. Businesses that provide food, shelter, and social services, and other necessities of life for economically disadvantaged or otherwise indigent individuals;
 - vi. Newspapers, television, radio, and other media services;
 - vii. Gas stations and auto-supply, auto-repair, and related facilities;
 - viii. Banks and related financial institutions;
 - ix. Hardware and construction supply stores;
 - x. Firearms and ammunition manufacturer, sales, or repair;
 - xi. Plumbers, electricians, exterminators, and other service providers who provide services that are necessary to maintaining the safety, sanitation, and essential operation of residences and businesses;
 - xii. Businesses providing mailing and shipping services, including post office boxes;
 - xiii. Laundromats, drycleaners, and laundry service providers;
 - xiv. Restaurants and other facilities that prepare and serve food, but only for delivery, drive through, or carry out. Patrons may not wait inside a restaurant for their food orders, unless physical distancing of 6-feet is observed at all times. Restaurants are urged to create a system that does not involve such lines or gatherings of people waiting to order or waiting to receive their order;
 - xv. Businesses that supply products needed for people to work from home;
 - xvi. Businesses that supply other Essential Businesses with the support or supplies necessary to operate;

- xvii. Businesses that warehouse, ship, or deliver groceries, food, goods, or services directly to residences or to Essential Businesses or Locked Businesses;
 - xviii. Airlines, taxis, and other private transportation providers providing transportation services necessary for Essential Activities and other purposes expressly authorized in this Amended Order;
 - xix. Home-based care for seniors, adults, or children;
 - xx. Residential facilities and shelters for seniors, adults, and children;
 - xxi. Professional services: legal, accounting, insurance, real estate services (including appraisal, survey, and title services);
 - xxii. Childcare facilities providing services that enable employees exempted in this Amended Order to work as permitted; provided, however, that to the extent possible, childcare facilities must operate under the following mandatory conditions: All Childcare must be carried out in accordance with guidelines provided by and under the direction of the Texas Department of Family and Protective Services, or any other State or Federal regulatory agency or department;
 - xxiii. Utilities, telecommunications, trash collection and disposal, law enforcement, EMS/ambulance, corrections, dispatch, animal shelters/animal control, and any other governmental employees who have been deemed essential by the respective governmental agency or department;
 - xxiv. Janitorial and maintenance services, defense industry, space and technology industry, technology support, and scientific research; and
 - xxv. Mortuary services, including funeral homes, crematoriums, and cemetery workers.
- h. **Locked Businesses.** For the purposes of this Amended Order, the term “Locked Businesses” means any business that: (i) operates with ten (10) or fewer employees, contractors, or subcontractors at any one time in a single physical facility; (ii) fully restricts public access to the inside of their business premises during the term of this Amended Order; and (iii) at all times, enforces Social Distancing Requirements among its employees, contractors, or subcontractors while they are performing services for the business at the business premises.
- i. **Minimum Basic Operations.** For the purposes of this Amended Order, “Minimum Basic Operations” include the following, provided that employees comply with Social Distancing Requirements as defined below, to the extent possible, while carrying out such operations: The minimum necessary activities to maintain the value of the business' inventory, ensure security, process payroll, and employee benefits or for related functions; and the minimum necessary activities to facilitate employees of the business being able to continue to work remotely from their residences.
- j. **Essential Travel.** For the purposes of this Order, the term “Essential Travel” includes travel for any of the following purposes:
- i. Any travel related to the provision of or access to Essential Activities, Essential Governmental Functions, Essential Businesses, or Minimum Basic Operations;
 - ii. Travel to care for elderly, minors, dependents, persons with disabilities, or other vulnerable persons;


- iii. Travel to or from educational institutions for purposes of receiving materials for distance learning, for receiving meals, and any other related services;
- iv. Travel to return to a place of residence from outside the jurisdiction;
- v. Travel required by law enforcement or court order; or
- vi. Travel required for non-residents to return to their place of residence⁴ outside the County. Individuals are strongly encouraged to verify that their transportation out of the County remains available and functional prior to commencing such travel. Individuals engaged in any Essential Travel must comply with all Social Distancing Requirements as defined below.

k. **Social Distancing Requirements.** For purposes of this Amended Order, the term “Social Distancing Requirements” means maintaining at least six-foot physical distancing from other individuals, washing hands with soap and water for at least twenty seconds as frequently as possible or using an alcohol based hand sanitizer, covering coughs or sneezes (into the sleeve or elbow, not hands), regularly cleaning high-touch surfaces, and not shaking hands.

- 8. Non-essential businesses shall shut down except for maintaining Minimum Basic Operations as defined herein. Essential Businesses and Locked Businesses exempted from shut-down are encouraged to determine staff who are essential to operations and to send non-essential staff home.
- 9. When people need to leave their places of residence, whether to obtain or perform vital services or to otherwise facilitate authorized activities necessary for continuity of social and commercial life, they should at all times as reasonably as possible comply with Social Distancing Requirements as defined in this Amended Order.
- 10. Failure to comply with any of the provisions of this Amended Order constitutes an imminent threat to public health. The penalty for violating this Amended Order, in accordance with Texas Government Code, Section 418.173, shall be a fine of no more than One Thousand Dollars (\$1,000.00), confinement in the county jail for a term up to 180 days, or both such fine and confinement. Each day a violation occurs is a separate and distinct violation. This Amended Order also authorizes any licensed peace officers with local county or state jurisdiction to enforce the provisions of this Amended Order.
- 11. All provisions of this Amended Order should be interpreted to effectuate its intent. If any subsection, sentence, clause, phrase, or word of this Amended Order or any application of it to any person, structure, gathering, or circumstance is held to be invalid or unconstitutional by a decision of a court of competent jurisdiction, then such decision will not affect the validity of the remaining portions or applications of this Amended Order.
- 12. This Amended Order takes effect at 11:59 p.m., Wednesday, April 1, 2020 and will continue through to the date on which the Governor terminates the Texas Disaster Declaration subject to any limited exceptions and under the terms and conditions more particularly set forth in this Order.

⁴ For purposes of this Amended Order, the term “residence” includes single-family or multi-family residential structures, duplexes, hotels, motels, shared rental units, and similar facilities.

Signed and dated the 1st day of April, 2020.

A handwritten signature in cursive script, appearing to read "Lucy Hebron". The signature is written in black ink and is positioned above a horizontal line.

LUCY HEBRON
WOOD COUNTY JUDGE

Franklin

Stay-At-Home Order

Essential vs Non-Essential Businesses

Essential



Health Care

- Pharmacy
- Hospital/Clinics
- Health Care Supplies
- Dentist
- Veterinarian



Some Retail

- Grocery Stores
- Gas Stations
- Online Retailers
- Restaurants (Carry Out)



Infrastructure

- First Responders
- Government
- Utilities/Trash Collection
- Media
- Mail/Delivery Services



Professional

- Banks
- Legal, Accounting, Insurance, etc.
- Real Estate
- Mortuary/Funeral Services



Property

- Hardware Stores
- Plumbers, Electricians, Service Providers, etc.
- Laundromats



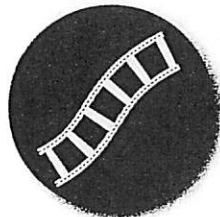
Other Services

- Transportation
- Construction
- Childcare
- Social Services

Non-Essential



All businesses not specifically listed as essential in the order are considered non-essential. A few examples are listed below.



Entertainment

- Theaters
- Museums
- Bowling Alleys



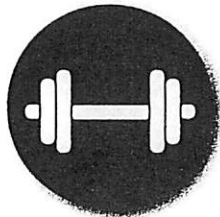
Personal Hygiene

- Hair Salons/Barber Shops
- Nail Salons
- Tattoo Parlors
- Massage Studios



Some Retail

- Clothing Stores
- Athletic Stores
- Hobby Stores
- Jewelry Stores
- Cosmetic Stores



Lifestyle

- Gyms
- Restaurants (Dine In)
- Bars



LUCY HEBRON
County Judge, Wood County
P.O. Box 938
Quitman, Texas 75783

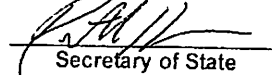


GOVERNOR GREG ABBOTT

March 31, 2020

FILED IN THE OFFICE OF THE
SECRETARY OF STATE
2 PM O'CLOCK

MAR 31 2020


Secretary of State

The Honorable Ruth R. Hughs
Secretary of State
State Capitol Room 1E.8
Austin, Texas 78701

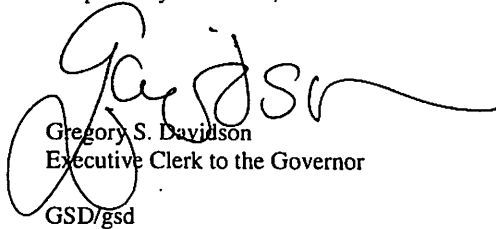
Dear Secretary Hughs:

Pursuant to his powers as Governor of the State of Texas, Greg Abbott has issued the following:

Executive Order No. GA-14 relating to statewide continuity of essential services
and activities during the COVID-19 disaster.

The original executive order is attached to this letter of transmittal.

Respectfully submitted,


Gregory S. Davidson
Executive Clerk to the Governor
GSD/gsd

Attachment

Executive Order

BY THE
GOVERNOR OF THE STATE OF TEXAS

Executive Department
Austin, Texas
March 31, 2020

EXECUTIVE ORDER
GA 14

*Relating to statewide continuity of essential services and activities
during the COVID-19 disaster.*

WHEREAS, I, Greg Abbott, Governor of Texas, issued a disaster proclamation on March 13, 2020, certifying under Section 418.014 of the Texas Government Code that the novel coronavirus (COVID-19) poses an imminent threat of disaster for all counties in the State of Texas; and

WHEREAS, the Commissioner of the Texas Department of State Health Services (DSHS), Dr. John Hellerstedt, has determined that COVID-19 represents a public health disaster within the meaning of Chapter 81 of the Texas Health and Safety Code; and

WHEREAS, I have issued numerous executive orders and suspensions of Texas laws in response to the COVID-19 disaster, aimed at protecting the health and safety of Texans and ensuring an effective response to this disaster; and

WHEREAS, I issued Executive Order GA-08 on March 19, 2020, mandating certain obligations for Texans in accordance with the President's Coronavirus Guidelines for America, as promulgated by President Donald J. Trump and the Centers for Disease Control and Prevention (CDC) on March 16, 2020, which called upon Americans to take actions to slow the spread of COVID-19 for 15 days; and

WHEREAS, Executive Order GA-08 is subject to expiration at 11:59 p.m. on April 3, 2020, absent further action by the governor; and

WHEREAS, on March 29, 2020, to avoid scenarios that could lead to hundreds of thousands of deaths, the President announced that, based on advice from Dr. Anthony Fauci and Dr. Deborah Birx, the restrictive social-distancing Guidelines should extend through April 30, 2020; and

WHEREAS, DSHS Commissioner Dr. Hellerstedt and White House Coronavirus Response Coordinator Dr. Birx say that the spread of COVID-19 can be reduced by minimizing social gatherings; and

WHEREAS, on March 28, 2020, the U.S. Department of Homeland Security issued its Guidance on the Essential Critical Infrastructure Workforce, Version 2.0, which provides an advisory list of critical-infrastructure sectors, workers, and functions that should continue during the COVID-19 response; and

WHEREAS, for state agencies and their employees and agents, the Office of the Attorney General of Texas has advised that local restrictions issued in response to the COVID-19 disaster do not apply to restrict the conduct of state business; and

FILED IN THE OFFICE OF THE
SECRETARY OF STATE
2 PM O'CLOCK

MAR 31 2020

WHEREAS, all government entities and businesses should be allowed to continue providing essential services during the COVID-19 disaster, and all critical infrastructure should be allowed to remain operational; and

WHEREAS, the “governor is responsible for meeting ... the dangers to the state and people presented by disasters” under Section 418.011 of the Texas Government Code, and the legislature has given the governor broad authority to fulfill that responsibility; and

WHEREAS, under Section 418.012, the “governor may issue executive orders ... hav[ing] the force and effect of law;” and

WHEREAS, under Section 418.016(a), the “governor may suspend the provisions of any regulatory statute prescribing the procedures for conduct of state business ... if strict compliance with the provisions ... would in any way prevent, hinder, or delay necessary action in coping with a disaster;” and

WHEREAS, under Section 418.017(a), the “governor may use all available resources of state government and of political subdivisions that are reasonably necessary to cope with a disaster;” and

WHEREAS, under Section 418.018(c), the “governor may control ingress and egress to and from a disaster area and the movement of persons and the occupancy of premises in the area;” and

WHEREAS, under Section 418.173, failure to comply with any executive order issued during the COVID-19 disaster is an offense punishable by a fine not to exceed \$1,000, confinement in jail for a term not to exceed 180 days, or both fine and confinement.

NOW, THEREFORE, I, Greg Abbott, Governor of Texas, by virtue of the power and authority vested in me by the Constitution and laws of the State of Texas, do hereby order the following on a statewide basis effective 12:01 a.m. on April 2, 2020, and continuing through April 30, 2020, subject to extension based on the status of COVID-19 in Texas and the recommendations of the CDC and the White House Coronavirus Task Force:

In accordance with guidance from DSHS Commissioner Dr. Hellerstedt, and to achieve the goals established by the President to reduce the spread of COVID-19, every person in Texas shall, except where necessary to provide or obtain essential services, minimize social gatherings and minimize in-person contact with people who are not in the same household.

“Essential services” shall consist of everything listed by the U.S. Department of Homeland Security in its Guidance on the Essential Critical Infrastructure Workforce, Version 2.0, plus religious services conducted in churches, congregations, and houses of worship. Other essential services may be added to this list with the approval of the Texas Division of Emergency Management (TDEM). TDEM shall maintain an online list of essential services, as specified in this executive order and in any approved additions. Requests for additions should be directed to TDEM at EssentialServices@tdem.texas.gov or by visiting www.tdem.texas.gov/essentialservices.

In providing or obtaining essential services, people and businesses should follow the Guidelines from the President and the CDC by practicing good hygiene, environmental cleanliness, and sanitation, implementing social distancing, and working from home if possible. In particular, all services should be provided through remote telework from

FILED IN THE OFFICE OF THE
SECRETARY OF STATE
2 PM O'CLOCK

MAR 31 2020

home unless they are essential services that cannot be provided through remote telework. If religious services cannot be conducted from home or through remote services, they should be conducted consistent with the Guidelines from the President and the CDC by practicing good hygiene, environmental cleanliness, and sanitation, and by implementing social distancing to prevent the spread of COVID-19.

In accordance with the Guidelines from the President and the CDC, people shall avoid eating or drinking at bars, restaurants, and food courts, or visiting gyms, massage establishments, tattoo studios, piercing studios, or cosmetology salons; provided, however, that the use of drive-thru, pickup, or delivery options for food and drinks is allowed and highly encouraged throughout the limited duration of this executive order.

This executive order does not prohibit people from accessing essential services or engaging in essential daily activities, such as going to the grocery store or gas station, providing or obtaining other essential services, visiting parks, hunting or fishing, or engaging in physical activity like jogging or bicycling, so long as the necessary precautions are maintained to reduce the transmission of COVID-19 and to minimize in-person contact with people who are not in the same household.

In accordance with the Guidelines from the President and the CDC, people shall not visit nursing homes, state supported living centers, assisted living facilities, or long-term care facilities unless to provide critical assistance as determined through guidance from the Texas Health and Human Services Commission.

In accordance with the Guidelines from the President and the CDC, schools shall remain temporarily closed to in-person classroom attendance and shall not recommence before May 4, 2020.

This executive order shall supersede any conflicting order issued by local officials in response to the COVID-19 disaster, but only to the extent that such a local order restricts essential services allowed by this executive order or allows gatherings prohibited by this executive order. I hereby suspend Sections 418.1015(b) and 418.108 of the Texas Government Code, Chapter 81, Subchapter E of the Texas Health and Safety Code, and any other relevant statutes, to the extent necessary to ensure that local officials do not impose restrictions inconsistent with this executive order, provided that local officials may enforce this executive order as well as local restrictions that are consistent with this executive order.

This executive order supersedes Executive Order GA-08, but not Executive Orders GA-09, GA-10, GA-11, GA-12, or GA-13, and shall remain in effect and in full force until April 30, 2020, unless it is modified, amended, rescinded, or superseded by the governor.



Given under my hand this the 31st day of
March, 2020.

A handwritten signature in cursive script that reads "Greg Abbott".

GREG ABBOTT
Governor

FILED IN THE OFFICE OF THE
SECRETARY OF STATE
2 PM O'CLOCK

MAR 31 2020

ATTESTED BY:



RUTH R. HUGHS
Secretary of State

FILED IN THE OFFICE OF THE
SECRETARY OF STATE
2 PM O'CLOCK
MAR 31 2020



CISA
CYBER+INFRASTRUCTURE

March 28, 2020

ADVISORY MEMORANDUM ON IDENTIFICATION OF ESSENTIAL CRITICAL INFRASTRUCTURE WORKERS DURING COVID-19 RESPONSE

FROM: Christopher C. Krebs
Director
Cybersecurity and Infrastructure Security Agency (CISA)

A handwritten signature in black ink, appearing to read "Chris Krebs", written over the printed name and title.

As the Nation comes together to slow the spread of COVID-19, on March 16th the President issued updated Coronavirus Guidance for America that highlighted the importance of the critical infrastructure workforce.

The Cybersecurity and Infrastructure Security Agency (CISA) executes the Secretary of Homeland Security's authorities to secure critical infrastructure. Consistent with these authorities, CISA has developed, in collaboration with other federal agencies, State and local governments, and the private sector, an "Essential Critical Infrastructure Workforce" advisory list. This list is intended to help State, local, tribal and territorial officials as they work to protect their communities, while ensuring continuity of functions critical to public health and safety, as well as economic and national security. Decisions informed by this list should also take into consideration additional public health considerations based on the specific COVID-19-related concerns of particular jurisdictions.

This list is advisory in nature. It is not, nor should it be considered, a federal directive or standard. Additionally, this advisory list is not intended to be the exclusive list of critical infrastructure sectors, workers, and functions that should continue during the COVID-19 response across all jurisdictions. Individual jurisdictions should add or subtract essential workforce categories based on their own requirements and discretion.

The advisory list identifies workers who conduct a range of operations and services that are typically essential to continued critical infrastructure viability, including staffing operations centers, maintaining and repairing critical infrastructure, operating call centers, working construction, and performing operational functions, among others. It also includes workers who support crucial supply chains and enable functions for critical infrastructure. The industries they support represent, but are not limited to, medical and healthcare, telecommunications, information technology systems, defense, food and agriculture, transportation and logistics, energy, water and wastewater, law enforcement,

and public works.

State, local, tribal, and territorial governments are responsible for implementing and executing response activities, including decisions about access and reentry, in their communities, while the Federal Government is in a supporting role. Officials should use their own judgment in issuing implementation directives and guidance. Similarly, while adhering to relevant public health guidance, critical infrastructure owners and operators are expected to use their own judgement on issues of the prioritization of business processes and workforce allocation to best ensure continuity of the essential goods and services they support. All decisions should appropriately balance public safety, the health and safety of the workforce, and the continued delivery of essential critical infrastructure services and functions. While this advisory list is meant to help public officials and employers identify essential work functions, it allows for the reality that some workers engaged in activity determined to be essential may be unable to perform those functions because of health-related concerns.

CISA will continue to work with our partners in the critical infrastructure community to update this advisory list if necessary as the Nation's response to COVID-19 evolves.

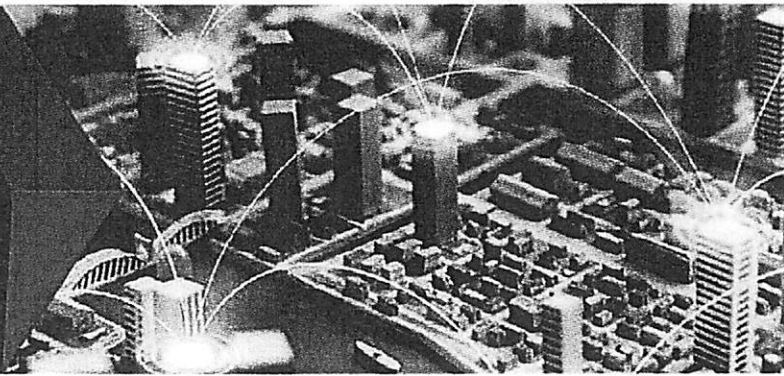
Should you have questions about this list, please contact CISA at CISA.CAT@cisa.dhs.gov.

Attachment: "Guidance on the Essential Critical Infrastructure Workforce: Ensuring Community and National Resilience in COVID-19 Response Version 2.0"



CISA
CYBER+INFRASTRUCTURE

DEFEND TODAY, SECURE TOMORROW



Guidance on the Essential Critical Infrastructure Workforce: Ensuring Community and National Resilience in COVID-19 Response

Version 2.0 (March 28, 2020)

THE IMPORTANCE OF ESSENTIAL CRITICAL INFRASTRUCTURE WORKERS

Functioning critical infrastructure is imperative during the response to the COVID-19 emergency for both public health and safety as well as community well-being. Certain critical infrastructure industries have a special responsibility in these times to continue operations.

This advisory guidance and accompanying list are intended to support state, local, tribal, territorial and industry partners in identifying the critical infrastructure sectors and the essential workers needed to maintain the services and functions Americans depend on daily and that need to be able to operate resiliently during the COVID-19 pandemic response.

This document gives advisory guidance on defining essential critical infrastructure workers. Promoting the ability of such workers to continue to work during periods of community restriction, access management, social distancing, or closure orders/directives is crucial to community resilience and continuity of essential functions.

CISA will continually solicit and accept feedback on the list and will evolve the list in response to stakeholder feedback. We will also use our various stakeholder engagement mechanisms to work with partners on how they are using this list and share those lessons learned and best practices broadly. Feedback can be sent to CISA.CAT@CISA.DHS.GOV.

CONSIDERATIONS FOR GOVERNMENT AND BUSINESS

This list was developed in consultation with federal agency partners, industry experts, and State and local officials, and is based on several key principles:

1. Response efforts to the COVID-19 pandemic are locally executed, state managed, and federally supported.
2. Everyone should follow guidance from the CDC, as well as State and local government officials, regarding strategies to limit disease spread.
3. Workers should be encouraged to work remotely when possible and focus on core business activities. In-person, non-mandatory activities should be delayed until the resumption of normal operations.
4. When continuous remote work is not possible, businesses should enlist strategies to reduce the likelihood of spreading the disease. This includes, but is not necessarily limited to, separating staff by off-setting shift hours or days and/or social distancing. These steps can preserve the workforce and allow operations to continue.
5. All organizations should implement their business continuity and pandemic plans or put plans in place if they do not exist. Delaying implementation is not advised and puts at risk the viability of the business and the

CONNECT WITH US

www.cisa.gov

For more information,
email CISA.CAT@cisa.dhs.gov



[Linkedin.com/company/cybersecurity-and-infrastructure-security-agency](https://www.linkedin.com/company/cybersecurity-and-infrastructure-security-agency)



@CISAgov | @cyber | @uscert_gov



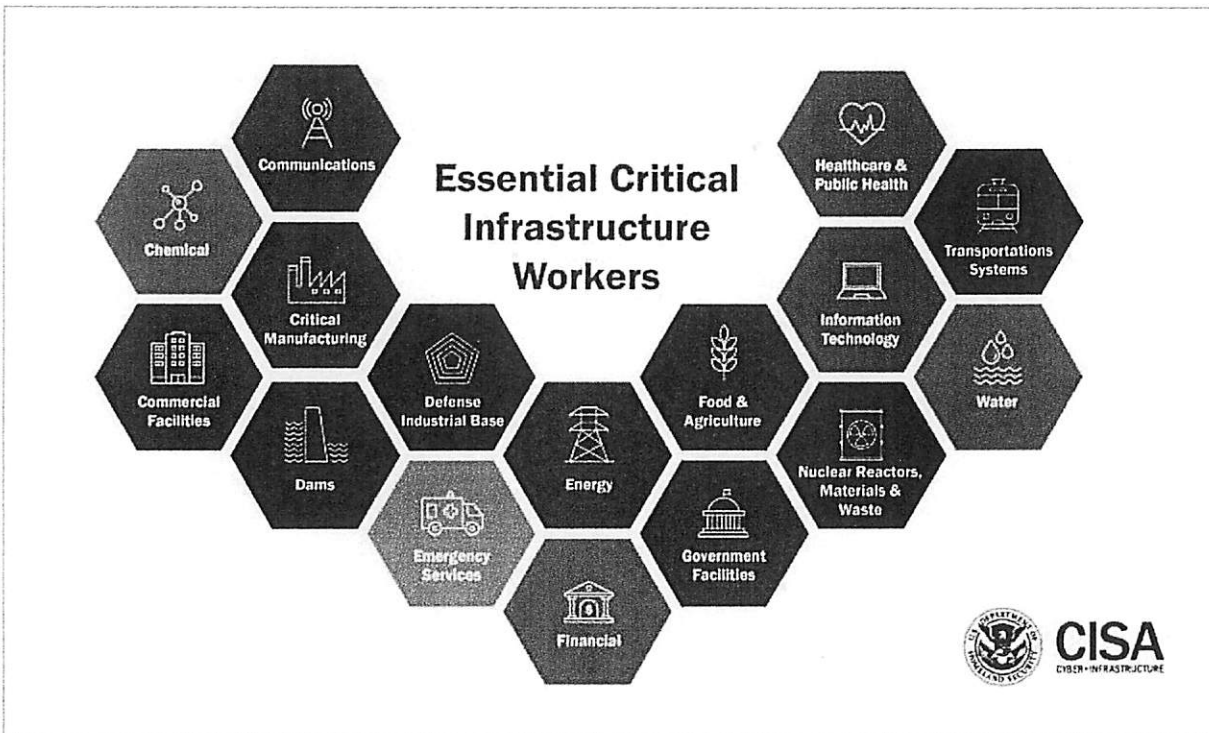
[Facebook.com/CISA](https://www.facebook.com/CISA)

health and safety of the employees.

6. Reliance on technology and just-in-time supply chains means that certain workers must be able to access certain sites, facilities, and assets to ensure continuity of functions.
7. Government employees, such as emergency managers, and the business community need to establish and maintain lines of communication.
8. When government and businesses engage in discussions about essential critical infrastructure workers, they need to consider the implications of business operations beyond the jurisdiction where the asset or facility is located. Businesses can have sizeable economic and societal impacts as well as supply chain dependencies that are geographically distributed.
9. Whenever possible, jurisdictions should align access and movement control policies related to critical infrastructure workers to lower the burden of workers crossing jurisdictional boundaries.

IDENTIFYING ESSENTIAL CRITICAL INFRASTRUCTURE WORKERS

The following list of identified essential critical infrastructure workers is intended to be overly inclusive reflecting the diversity of industries across the United States.




CONNECT WITH US
www.cisa.gov

For more information,
email CISA.CAT@cisa.dhs.gov

 [Linkedin.com/company/cybersecurity-and-infrastructure-security-agency](https://www.linkedin.com/company/cybersecurity-and-infrastructure-security-agency)

 @CISAgov | @cyber | @uscert_gov

 [Facebook.com/CISA](https://www.facebook.com/CISA)

HEALTHCARE / PUBLIC HEALTH

- Workers who perform critical clinical research, development, and testing needed for COVID-19 response.
- Healthcare providers and Caregivers including physicians, dentists, psychologists, mid-level practitioners, nurses and assistants, infection control and quality assurance personnel, pharmacists, physical and occupational therapists and assistants, social workers, optometrists, speech pathologists, chiropractors, and diagnostic and therapeutic technicians and technologists.
- Hospital and laboratory personnel (including accounting, administrative, admitting and discharge, engineering, epidemiological, source plasma and blood donation, food service, housekeeping, medical records, information technology and operational technology, nutritionists, sanitarians, respiratory therapists, etc.).
- Workers in other medical and biomedical facilities (including Ambulatory Health and Surgical, Blood Banks, Clinics, Community Mental Health, Comprehensive Outpatient rehabilitation, End Stage Renal Disease, Health Departments, Home Health care, Hospices, Hospitals, Long Term Care, Nursing Care Facilities, Organ Pharmacies, Procurement Organizations, Psychiatric Residential, Rural Health Clinics and Federally Qualified Health Centers, and retail facilities specializing in medical good and supplies).
- Manufacturer workers for health manufacturing (including biotechnology companies), materials and parts suppliers, logistics and warehouse operators, distributors of medical equipment (including those who test and repair), personal protective equipment (PPE), isolation barriers, medical gases, pharmaceuticals (including materials used in radioactive drugs), dietary supplements, blood and blood products, vaccines, testing materials, laboratory supplies, cleaning, sanitizing, disinfecting or sterilization supplies, and tissue and paper towel products.
- Public health / community health workers, including those who compile, model, analyze and communicate public health information.
- Blood and plasma donors and the employees of the organizations that operate and manage related activities.
- Workers who manage health plans, billing, and health information, who cannot practically work remotely.
- Workers who conduct community-based public health functions, conducting epidemiologic surveillance, compiling, analyzing and communicating public health information, who cannot practically work remotely.
- Workers performing information technology and cybersecurity functions at healthcare and public health facilities, who cannot practically work remotely.
- Workers performing security, incident management, and emergency operations functions at or on behalf of healthcare entities including healthcare coalitions, who cannot practically work remotely.
- Pharmacy employees necessary to maintain uninterrupted prescription filling.
- Workers performing mortuary funeral, cremation, burial, cemetery, and related services, including funeral homes, crematoriums, cemetery workers, and coffin makers.
- Workers who coordinate with other organizations to ensure the proper recovery, handling, identification, transportation, tracking, storage, and disposal of human remains and personal effects; certify cause of death; and facilitate access to mental/behavioral health services to the family members, responders, and survivors of an incident.

CONNECT WITH US

www.cisa.gov

For more information,
email CISA.CAT@cisa.dhs.gov



[Linkedin.com/company/cybersecurity-and-infrastructure-security-agency](https://www.linkedin.com/company/cybersecurity-and-infrastructure-security-agency)



@CISAgov | @cyber | @uscrt_gov



[Facebook.com/CISA](https://www.facebook.com/CISA)

LAW ENFORCEMENT, PUBLIC SAFETY, AND OTHER FIRST RESPONDERS

- Public, private, and voluntary personnel (front line and management) in emergency management, law enforcement, fire and rescue services, emergency medical services, and private security, to include public and private hazardous material responders, air medical service providers (pilots and supporting technicians), corrections, and search and rescue personnel.
- 911 call center employees and Public Safety Answering Points who can't perform their duties remotely.
- Fusion Center employees.
- Workers – including contracted vendors – who maintain, manufacture, or supply equipment and services supporting law enforcement emergency service and response operations (to include electronic security and life safety security personnel).
- Workers supporting the manufacturing of safety equipment and uniforms for law enforcement, public safety personnel, and first responder.
- Workers supporting the operation of firearm or ammunition product manufacturers, retailers, importers, distributors, and shooting ranges.
- Public agency workers responding to abuse and neglect of children, elders, and dependent adults.
- Workers who support weather disaster / natural hazard mitigation and prevention activities.
- Security staff to maintain building access control and physical security measures.

FOOD AND AGRICULTURE

- Workers supporting groceries, pharmacies, convenience stores, and other retail (including unattended and vending) that sells human food, animal/pet food and pet supply, and beverage products, including retail customer support service and information technology support staff necessary for online orders, pickup and delivery.
- Restaurant carry-out and quick serve food operations, including dark kitchen and food prep centers, and carry-out and delivery food employees.
- Food manufacturer employees and their supplier employees—to include those employed in food ingredient production and processing facilities; livestock, poultry, seafood slaughter facilities; pet and animal feed processing facilities; human food facilities producing by-products for animal food; beverage production facilities; and the production of food packaging.
- Farmers, farm workers, and agribusiness support services to include those employed in auction and sales: grain and oilseed handling, processing and distribution; animal food, feed, and ingredient production, packaging, and distribution; manufacturing, packaging, and distribution of veterinary drugs; truck delivery and transport; farm and fishery labor needed to produce our food supply domestically and for export.
- Farmers, farm workers, support service workers, and their supplier employees to include those engaged in producing and harvesting field crops; commodity inspection; fuel ethanol facilities; biodiesel and renewable diesel facilities; storage facilities; and other agricultural inputs.
- Employees and firms supporting the distribution of food, feed, and beverage and ingredients used in these products, including warehouse workers, vendor- managed inventory controllers and blockchain managers.
- Workers supporting the sanitation and pest control of all food manufacturing processes and operations from wholesale to retail.
- Employees in cafeterias used to feed employees, particularly employee populations sheltered against COVID-19.
- Workers in animal diagnostic and food testing laboratories in private industries and in institutions of higher education.

CONNECT WITH US

www.cisa.gov

For more information,
email CISA.CAT@cisa.dhs.gov



[Linkedin.com/company/cybersecurity-and-infrastructure-security-agency](https://www.linkedin.com/company/cybersecurity-and-infrastructure-security-agency)



@CISAgov | @cyber | @uscert_gov



[Facebook.com/CISA](https://www.facebook.com/CISA)

- Government, private, and non-governmental organizations' workers essential for food assistance programs (including school lunch programs) and government payments.
- Employees of companies engaged in the production, storage, transport, and distribution of chemicals, medicines, vaccines, and other substances used by the food and agriculture industry, including seeds, pesticides, herbicides, fertilizers, minerals, enrichments, and other agricultural production aids.
- Animal agriculture workers to include those employed in veterinary health (including those involved in supporting emergency veterinary or livestock services); raising of animals for food; animal production operations; livestock markets; slaughter and packing plants, manufacturers, renderers, and associated regulatory and government workforce.
- Transportation supporting animal agricultural industries, including movement of animal medical and reproductive supplies and materials, animal vaccines, animal drugs, feed ingredients, feed, and bedding, live animals, animal by-products, and deceased animals for disposal.
- Workers who support sawmills and the manufacture and distribution of fiber and forest products, including, but not limited to timber, paper, and other wood and fiber products.
- Employees engaged in the manufacture and maintenance of equipment and other infrastructure necessary for agricultural production and distribution.

ENERGY

- Workers supporting the energy sector, regardless of the energy source (including but not limited to nuclear, fossil, hydroelectric, or renewable), segment of the system, or infrastructure the worker is involved in, or who are needed to monitor, operate, engineer, and maintain the reliability, safety, environmental health, and physical and cyber security of the energysystem.
- Energy/commodity trading/scheduling/marketing functions, who can't perform their duties remotely.
- IT and OT technology for essential energy sector operations including support workers, customer service operations; energy management systems, control systems, and Supervisory Control and Data Acquisition SCADA systems, and energy sector entity data centers; cybersecurity engineers; and cybersecurity risk management.
- Workers supporting the energy sector through renewable energy infrastructure (including, but not limited to wind, solar, biomass, hydrogen, ocean, geothermal, and/or hydroelectric), including those supporting construction, manufacturing, transportation, permitting, operation/maintenance, monitoring, and logistics.
- Workers and security staff involved in nuclear re-fueling operations.
- Providing services related to energy sector fuels (including, but not limited, petroleum (crude oil), natural gas, propane, natural gas liquids, other liquid fuels, nuclear, and coal), supporting the mining, processing, manufacturing, construction, logistics, transportation, permitting, operation/maintenance, security, waste disposal and storage, and monitoring of support for resources.
- Environmental remediation/monitoring, limited to immediate critical needs technicians.
- Manufacturing and distribution of equipment, supplies, and parts necessary to maintain production, maintenance, restoration, and service at energy sector facilities (across all energy sector segments).

Electricity industry:

- Workers who maintain, ensure, or restore, or are involved in the development, transportation, fuel procurement, expansion, or operation of the generation, transmission, and distribution of electric power, including call centers, utility workers, engineers, retail electricity, constraint maintenance, and fleet maintenance technicians who cannot perform their duties remotely.
- Workers at coal mines, production facilities, and those involved in manufacturing, transportation, permitting, operation/maintenance and monitoring at coal sites which is critical to ensuring the reliability of the electrical system.

CONNECT WITH US

www.clsa.gov

For more information,
email CISA.CAT@clsa.dhs.gov



[Linkedin.com/company/cybersecurity-and-infrastructure-security-agency](https://www.linkedin.com/company/cybersecurity-and-infrastructure-security-agency)



@CISAgov | @cyber | @uscert_gov



[Facebook.com/CISA](https://www.facebook.com/CISA)

Essential Critical Infrastructure Workforce

- Workers who produce, process, ship and handle coal used for power generation and manufacturing.
- Workers needed for safe and secure operations at nuclear generation to include but not limited to, the broader nuclear supply chain, parts to maintain nuclear equipment, fuel manufacturers and fuel components used in the manufacturing of fuel.
- Workers at renewable energy infrastructure (including, but not limited to wind, solar, biomass, hydrogen, geothermal, and/or hydroelectric), including those supporting construction, manufacturing, transportation, permitting, operation/maintenance, monitoring, and logistics.
- Workers at generation, transmission, and electric black start facilities.
- Workers at Reliability Coordinator, Balancing Authorities, and primary and backup Control Centers, including but not limited to independent system operators, regional transmission organizations, and local distribution control centers.
- Mutual assistance personnel which may include workers from outside of the state or local jurisdiction.
- Vegetation management and traffic control for supporting those crews.
- Environmental remediation/monitoring workers limited to immediate critical need technicians.
- Instrumentation, protection, and control technicians.
- Essential support personnel for electricity operations.
- Generator set support workers such as diesel engineers used in power generation including those providing fuel.

Petroleum industry:

- Workers for onshore and offshore petroleum drilling operations; platform and drilling construction and maintenance; transportation (including helicopter operations), maritime transportation, supply, and dredging operations; maritime navigation; well stimulation, intervention, monitoring, automation and control, extraction, production; processing; waste disposal, and maintenance, construction, and operations.
- Workers for crude oil, petroleum and petroleum product storage and transportation, including pipeline, marine transport, terminals, rail transport, storage facilities and racks and road transport for use as end-use fuels such as gasoline, diesel fuel, jet fuel, and heating fuels or feedstocks for chemical manufacturing.
- Petroleum and petroleum product security operations center employees and workers who support maintenance and emergency response services.
- Petroleum and petroleum product operations control rooms/centers and refinery facilities.
- Retail fuel centers such as gas stations and truck stops, and the distribution systems that support them.
- Supporting new and existing construction projects, including, but not limited to, pipeline construction.

Natural Gas, Natural Gas Liquids (NGL), Propane, and other liquid fuels

- Workers who support onshore and offshore drilling operations, platform and drilling construction and maintenance; transportation (including helicopter operations); maritime transportation, supply, and dredging operations; maritime navigation; natural gas and natural gas liquid production, processing, extraction, storage and transportation; well intervention, monitoring, automation and control; waste disposal, and maintenance, construction, and operations.
- Transmission and distribution pipeline workers, including compressor stations and any other required, operations maintenance, construction, and support for natural gas, natural gas liquid, propane, and other liquid fuels.
- Natural gas, propane, natural gas liquids, and other liquid fuel processing plants, including construction, maintenance, and support operations.
- Natural gas processing plants workers, and those that deal with natural gas liquids.
- Workers who staff natural gas, propane, natural gas liquids, and other liquid fuel security operations centers, operations dispatch and control rooms/centers, and emergency response and customer emergencies (including leak calls) operations.
- Drilling, production, processing, refining, and transporting natural gas for use as end-use fuels, feedstocks for

CONNECT WITH US

www.cisa.gov

For more information,
email CISA.CAT@cisa.dhs.gov



[Linkedin.com/company/cybersecurity-and-infrastructure-security-agency](https://www.linkedin.com/company/cybersecurity-and-infrastructure-security-agency)



[@CISAgov](https://twitter.com/CISAgov) | [@cyber](https://twitter.com/@cyber) | [@uscert_gov](https://twitter.com/@uscert_gov)



[Facebook.com/CISA](https://www.facebook.com/CISA)

chemical manufacturing, or use in electricity generation.

- Dispatch and control rooms and emergency response and customer emergencies, including propane leak calls.
- Propane gas service maintenance and restoration, including call centers.
- Propane, natural gas liquids, and other liquid fuel distribution centers.
- Propane gas storage, transmission, and distribution centers.
- Supporting new and existing construction projects, including, but not limited to, pipeline construction.
- Ethanol and biofuel production, refining, and distribution.
- Workers in fuel sectors (including, but not limited to nuclear, coal, and gas types and liquid fuels) supporting the mining, manufacturing, logistics, transportation, permitting, operation/maintenance, and monitoring of support for resources.

WATER AND WASTEWATER

Employees needed to operate and maintain drinking water and wastewater/drainage infrastructure, including:

- Operational staff at water authorities.
- Operational staff at community water systems.
- Operational staff at wastewater treatment facilities.
- Workers repairing water and wastewater conveyances and performing required sampling or monitoring, including field staff.
- Operational staff for water distribution and testing.
- Operational staff at wastewater collection facilities.
- Operational staff and technical support for SCADA Control systems.
- Chemical and equipment suppliers to water and wastewater systems and personnel protection.
- Workers who maintain digital systems infrastructure supporting water and wastewater operations.

TRANSPORTATION AND LOGISTICS

- Employees supporting or enabling transportation functions, including truck drivers, bus drivers, dispatchers, maintenance and repair technicians, warehouse workers, truck stop and rest area workers, Department of Motor Vehicle (DMV) employees, towing/recovery services, roadside assistance workers, intermodal transportation personnel, and workers who maintain and inspect infrastructure (including those that require cross-jurisdiction travel).
- Workers supporting the distribution of food, pharmaceuticals (including materials used in radioactive drugs) and other medical materials, fuels, chemicals needed for water or water treatment and energy Maintenance and operation of essential highway infrastructure, including roads, bridges, and tunnels (e.g., traffic operations centers and moveable bridge operators).
- Employees of firms providing services, supplies, and equipment that enable warehouse and operations, including cooling, storing, packaging, and distributing products for wholesale or retail sale or use. Includes cold- and frozen-chain logistics for food and critical biologic products.
- Mass transit workers and providing critical transit services and/or performing critical or routine maintenance to mass transit infrastructure or equipment.
- Employees supporting personal and commercial transportation services – including taxis, delivery services, vehicle rental services, bicycle maintenance and car-sharing services, and transportation network providers.
- Workers responsible for operating and dispatching passenger, commuter and freight trains and maintaining rail infrastructure and equipment.
- Maritime transportation workers, including dredgers, port workers, mariners, ship crewmembers, ship pilots and tug boat operators, equipment operators (to include maintenance and repair, and maritime-specific medical

CONNECT WITH US

www.cisa.gov

For more information,
email CISA.CAT@cisa.dhs.gov



[Linkedin.com/company/cybersecurity-and-infrastructure-security-agency](https://www.linkedin.com/company/cybersecurity-and-infrastructure-security-agency)



[@CISAgov](https://twitter.com/CISAgov) | [@cyber](https://twitter.com/cyber) | [@uscert_gov](https://twitter.com/uscert_gov)



[Facebook.com/CISA](https://www.facebook.com/CISA)

- providers), ship supply, chandler, and repair companies.
- Workers including truck drivers, railroad employees and contractors, maintenance crew, and cleaners supporting transportation of chemicals, hazardous, medical, and waste materials to support critical infrastructure, capabilities, functions, and services, including specialized carriers, crane and rigging industryworkers.
 - Bus drivers and workers who provide or support intercity, commuter and charter bus service in support of other essential services or functions.
 - Automotive repair, maintenance, and transportation equipment manufacturing and distribution facilities (including those who repair and maintain electric vehicle charging stations).
 - Transportation safety inspectors, including hazardous material inspectors and accident investigator inspectors.
 - Manufacturers and distributors (to include service centers and related operations) of packaging materials, pallets, crates, containers, and other supplies needed to support manufacturing, packaging staging and distributionoperations.
 - Postal, parcel, courier, last-mile delivery, and shipping and related workers, to include private companies.
 - Employees who repair and maintain vehicles, aircraft, rail equipment, marine vessels, bicycles, and the equipmentand infrastructure that enables operations that encompass movement of cargo and passengers.
 - Air transportation employees, including air traffic controllers and maintenance personnel, ramp workers, aviation and aerospace safety, security, and operations personnel and accident investigations.
 - Workers who support the operation, distribution, maintenance, and sanitation, of air transportation for cargo and passengers, including flight crews, maintenance, airport operations, those responsible for cleaning and disinfection, and other on- and off- airport facilitiesworkers.
 - Workers supporting transportation via inland waterways such as barge crew, dredging, river port workers for essential goods.
 - Workers critical to rental and leasing of vehicles and equipment that facilitate continuity of operations for essential workforces and other essential travel.
 - Warehouse operators, including vendors and support personnel critical for business continuity (including HVAC & electrical engineers; security personnel; and janitorial staff) and customer service for essential functions.

PUBLIC WORKS AND INFRASTRUCTURE SUPPORT SERVICES

- Workers who support the operation, inspection, and maintenance of essential public works facilities and operations, including bridges, water and sewer main breaks, fleet maintenance personnel, construction of critical or strategic infrastructure, traffic signal maintenance, emergency location services for buried utilities, maintenance of digital systems infrastructure supporting public works operations, and other emergent issues.
- Workers such as plumbers, electricians, exterminators, builders, contractors, HVAC Technicians, landscapers, and other service providers who provide services that are necessary to maintaining the safety, sanitation, and essential operation of residences, businesses and buildings such as hospitals, senior living facilities, any temporary construction required to support COVID-19 response.
- Workers who support, such as road and line clearing, to ensure the availability of and access to needed facilities, transportation, energy and communications.
- Support to ensure the effective removal, storage, and disposal of residential and commercial solid waste and hazardous waste, including landfilloperations.
- Workers who support the operation, inspection, and maintenance of essential dams, locks and levees.
- Workers who support the inspection and maintenance of aids to navigation, and other government provided services that ensure continued maritime commerce.

CONNECT WITH US

www.clsa.gov

For more Information,
email CISA.CAT@clsa.dhs.gov

 [Linkedin.com/company/cybersecurity-and-infrastructure-security-agency](https://www.linkedin.com/company/cybersecurity-and-infrastructure-security-agency)

 @CISAgov | @cyber | @uscert_gov

 [Facebook.com/CISA](https://www.facebook.com/CISA)

COMMUNICATIONS AND INFORMATION TECHNOLOGY

Communications:

- Maintenance of communications infrastructure- including privately owned and maintained communication systems- supported by technicians, operators, call -centers, wireline and wireless providers, cable service providers, satellite operations, Internet Exchange Points, Points of Presence, Network Access Points, back haul and front haul facilities, and manufacturers and distributors of communications equipment.
- Government and private sector employees (including government contractors) with work related to undersea cable infrastructure and support facilities, including cable landing sites, beach manhole vaults and covers, submarine cable depots and submarine cable ship facilities.
- Government and private sector employees (including government contractors) supporting Department of Defense internet and communications facilities.
- Workers who support radio, television, and media service, including, but not limited to front-line news reporters, studio, and technicians for newsgathering, and reporting, and publishing news.
- Network Operations staff, engineers and/or technicians to include IT managers and staff, HVAC & electrical engineers, security personnel, software and hardware engineers, and database administrators that manage the network or operate facilities.
- Engineers, technicians and associated personnel responsible for infrastructure construction and restoration, including contractors for construction and engineering of fiber optic cables, buried conduit, small cells, other wireless facilities, and other communications sector-related infrastructure. This includes construction of new facilities and deployment of new technology as these are required to address congestion or customer usage due to unprecedented use of remote services.
- Installation, maintenance and repair technicians that establish, support or repair service as needed.
- Central office personnel to maintain and operate central office, data centers, and other network office facilities, critical support personnel assisting front line employees.
- Customer service and support staff, including managed and professional services as well as remote providers of support to transitioning employees to set up and maintain home offices, who interface with customers to manage or support service environments and security issues, including payroll, billing, fraud, logistics, and troubleshooting.
- Workers providing electronic security, fire, monitoring and life safety services, and to ensure physical security, cleanliness and safety of facilities and personnel, including temporary licensing waivers for security personnel to work in other States of Municipalities.
- Dispatchers involved with service repair and restoration.
- Retail customer service personnel at critical service center locations for onboarding customers, distributing and repairing equipment and addressing customer issues in order to support individuals' remote emergency communications needs, supply chain and logistics personnel to ensure goods and products are on-boarded to provision these front-line employees.
- External Affairs personnel to assist in coordinating with local, state and federal officials to address communications needs supporting COVID-19 response, public safety, and national security.

Information Technology:

- Workers who support command centers, including, but not limited to Network Operations Command Centers, Broadcast Operations Control Centers and Security Operations Command Centers.
- Data center operators, including system administrators, HVAC & electrical engineers, security personnel, IT managers and purchasers, data transfer solutions engineers, software and hardware engineers, and database administrators, for all industries (including financial services).

CONNECT WITH US

www.clsa.gov

For more information,
email CISA.CAT@clsa.dhs.gov



[Linkedin.com/company/cybersecurity-and-infrastructure-security-agency](https://www.linkedin.com/company/cybersecurity-and-infrastructure-security-agency)



@CISAgov | @cyber | @uscert_gov



[Facebook.com/CISA](https://www.facebook.com/CISA)

- Workers who support client service centers, field engineers, and other technicians and workers supporting critical infrastructure, as well as manufacturers and supply chain vendors that provide hardware and software, support services, research and development, and information technology equipment (to include microelectronics and semiconductors), and HVAC and electrical equipment for critical infrastructure, and test labs and certification agencies that qualify such equipment (to include microelectronics, optoelectronics, and semiconductors) for critical infrastructure, including data centers.
- Workers needed to preempt and respond to cyber incidents involving critical infrastructure, including medical facilities, SLTT governments and federal facilities, energy and utilities, and banks and financial institutions, securities/other exchanges, other entities that support the functioning of capital markets, public works, critical manufacturing, food & agricultural production, transportation, and other critical infrastructure categories and personnel, in addition to all cyber defense workers (who can't perform their duties remotely).
- Suppliers, designers, transporters and other workers supporting the manufacture, distribution and provision and construction of essential global, national and local infrastructure for computing services (including cloud computing services and telework capabilities), business infrastructure, financial transactions/services, web-based services, and critical manufacturing.
- Workers supporting communications systems and information technology- and work from home solutions- used by law enforcement, public safety, medical, energy, public works, critical manufacturing, food & agricultural production, financial services, education, and other critical industries and businesses.
- Employees required in person to support Software as a Service businesses that enable remote working, performance of business operations, distance learning, media services, and digital health offerings, or required for technical support crucial for business continuity and connectivity.

OTHER COMMUNITY- OR GOVERNMENT-BASED OPERATIONS AND ESSENTIAL FUNCTIONS

- Workers to ensure continuity of building functions, including but not limited to security and environmental controls (e.g., HVAC), the manufacturing and distribution of the products required for these functions, and the permits and inspections for construction supporting essential infrastructure.
- Elections personnel to include both public and private sector elections support.
- Workers supporting the operations of the judicial system.
- Federal, State, and Local, Tribal, and Territorial employees who support Mission Essential Functions and communications networks.
- Trade Officials (FTA negotiators; international data flow administrators).
- Employees necessary to maintain news and media operations across various media.
- Employees supporting Census 2020.
- Weather forecasters.
- Clergy for essential support.
- Workers who maintain digital systems infrastructure supporting other critical government operations.
- Workers who support necessary credentialing, vetting and licensing operations for critical infrastructure workers.
- Customs and immigration workers who are critical to facilitating trade in support of the national emergency response supply chain.
- Educators supporting public and private K-12 schools, colleges, and universities for purposes of facilitating distance learning or performing other essential functions.
- Staff at government offices who perform title search, notary, and recording services in support of mortgage and real estate services and transactions.

CONNECT WITH US

www.cisa.gov

For more information,
email CISA.CAT@cisa.dhs.gov



[Linkedin.com/company/cybersecurity-and-infrastructure-security-agency](https://www.linkedin.com/company/cybersecurity-and-infrastructure-security-agency)



[@CISAgov](https://twitter.com/CISAgov) | [@cyber](https://twitter.com/@cyber) | [@uscert_gov](https://twitter.com/@uscert_gov)



[Facebook.com/CISA](https://www.facebook.com/CISA)

- Residential and commercial real estate services, including settlement services.
- Workers supporting essential maintenance, manufacturing, design, operation, inspection, security, and construction for essential products, services, and supply chain and COVID 19 relief efforts.

CRITICAL MANUFACTURING

- Workers necessary for the manufacturing of metals (including steel and aluminum), industrial minerals, semiconductors, materials and products needed for medical supply chains, and for supply chains associated with transportation, energy, communications, information technology, food and agriculture, chemical manufacturing, nuclear facilities, wood products, commodities used as fuel for power generation facilities, the operation of dams, water and wastewater treatment, processing and reprocessing of solid waste, emergency services, and the defense industrial base. Additionally, workers needed to maintain the continuity of these manufacturing functions and associated supply chains, and workers necessary to maintain a manufacturing operation in warm standby.
- Workers necessary for the manufacturing of materials and products needed to manufacture medical equipment and personal protective equipment (PPE).
- Workers necessary for mining and production of critical minerals, materials and associated essential supply chains, and workers engaged in the manufacture and maintenance of equipment and other infrastructure necessary for mining production and distribution.
- Workers who produce or manufacture parts or equipment that supports continued operations for any essential services and increase in remote workforce (including computing and communication devices, semiconductors, and equipment such as security tools for Security Operations Centers (SOCs) or data centers).

HAZARDOUS MATERIALS

- Workers who manage hazardous materials associated with any other essential activity, including but not limited to healthcare waste (medical, pharmaceuticals, medical material production), testing operations (laboratories processing test kits), and energy (nuclear facilities) Workers at nuclear facilities, workers managing medical waste, workers managing waste from pharmaceuticals and medical material production, and workers at laboratories processing tests Workers who support hazardous materials response and cleanup.
- Workers who maintain digital systems infrastructure supporting hazardous materials management operations.

FINANCIAL SERVICES

- Workers who are needed to provide, process and maintain systems for processing, verification, and recording of financial transactions and services, including payment, clearing, and settlement; wholesale funding; insurance services; consumer and commercial lending; and capital markets activities).
- Workers who are needed to maintain orderly market operations to ensure the continuity of financial transactions and services.
- Workers who are needed to provide business, commercial, and consumer access to bank and non-bank financial services and lending services, including ATMs, lending and money transmission, and to move currency, checks, securities, and payments (e.g., armored cash carriers).
- Workers who support financial operations and those staffing call centers, such as those staffing data and security operations centers, managing physical security, or providing accounting services.
- Workers supporting production and distribution of debit and credit cards.
- Workers providing electronic point of sale support personnel for essential businesses and workers.

CONNECT WITH US

www.clsa.gov

For more information,
email CISA.CAT@clsa.dhs.gov



[Linkedin.com/company/cybersecurity-and-infrastructure-security-agency](https://www.linkedin.com/company/cybersecurity-and-infrastructure-security-agency)



@CISAgov | @cyber | @uscert_gov



[Facebook.com/CISA](https://www.facebook.com/CISA)

CHEMICAL

- Workers supporting the chemical and industrial gas supply chains, including workers at chemical manufacturing plants, workers in laboratories, workers at distribution facilities, workers who transport basic raw chemical materials to the producers of industrial and consumer goods, including hand sanitizers, food and food additives, pharmaceuticals, paintings and coatings, textiles, building materials, plumbing, electrical, and paper products.
- Workers supporting the safe transportation of chemicals, including those supporting tank truck cleaning facilities and workers who manufacture packaging items.
- Workers supporting the production of protective cleaning and medical solutions, personal protective equipment, disinfectants, fragrances, and packaging that prevents the contamination of food, water, medicine, among others essential.
- Workers supporting the operation and maintenance of facilities (particularly those with high risk chemicals and/or sites that cannot be shut down) whose work cannot be done remotely and requires the presence of highly trained personnel to ensure safe operations, including plant contract workers who provide inspections.
- Workers who support the production and transportation of chlorine and alkali manufacturing, single-use plastics, and packaging that prevents the contamination or supports the continued manufacture of food, water, medicine, and other essential products, including glass container manufacturing.

DEFENSE INDUSTRIAL BASE

- Workers who support the essential services required to meet national security commitments to the federal government and U.S. Military. These individuals include, but are not limited to, space and aerospace; mechanical and software engineers (various disciplines), manufacturing/production workers; IT support; security staff; security personnel; intelligence support, aircraft and weapon system mechanics and maintainers; and sanitary workers who maintain the hygienic viability of necessary facilities.
- Personnel working for companies, and their subcontractors, who perform under contract or sub-contract to the Department of Defense, as well as personnel at government-owned/contractor-operated and government-owned/government-operated facilities, and who provide materials and services to the Department of Defense, including support for weapon systems, software systems and cybersecurity, defense and intelligence communications and surveillance, space systems and other activities in support of our military, intelligence and space forces.

COMMERCIAL FACILITIES

- Workers who support the supply chain of building materials from production through application/installation, including cabinetry, fixtures, doors, cement, hardware, plumbing, electrical, heating/cooling, refrigeration, appliances, paint/coatings, and employees who provide services that enable repair materials and equipment for essential functions.
- Workers supporting ecommerce through distribution, warehouse, call center facilities, and other essential operational support functions.
- Workers in hardware and building materials stores, consumer electronics, technology and appliances retail, and related merchant wholesalers and distributors - with reduced staff to ensure continued operations.
- Workers distributing, servicing, repairing, installing residential and commercial HVAC systems, boilers, furnaces and other heating, cooling, refrigeration, and ventilation equipment.

RESIDENTIAL/SHELTER FACILITIES AND SERVICES

- Workers in dependent care services, in support of workers in other essential products and services.

CONNECT WITH US

www.cisa.gov

For more information,
email CISA.CAT@cisa.dhs.gov



[Linkedin.com/company/cybersecurity-and-infrastructure-security-agency](https://www.linkedin.com/company/cybersecurity-and-infrastructure-security-agency)



[@CISAgov](https://twitter.com/CISAgov) | [@cyber](https://twitter.com/cyber) | [@uscert_gov](https://twitter.com/uscert_gov)



[Facebook.com/CISA](https://www.facebook.com/CISA)

- Workers who support food, shelter, and social services, and other necessities of life for needy groups and individuals, including in-need populations and COVID-19 responders (including travelling medical staff).
- Workers in animal shelters.
- Workers responsible for the leasing of residential properties to provide individuals and families with ready access to available housing.
- Workers responsible for handling property management, maintenance, and related service calls who can coordinate the response to emergency “at-home” situations requiring immediate attention, as well as facilitate the reception of deliveries, mail, and other necessary services.
- Workers performing housing construction related activities to ensure additional units can be made available to combat the nation’s existing housing supply shortage.
- Workers performing services in support of the elderly and disabled populations who coordinate a variety of services, including health care appointments and activities of daily living.
- Workers supporting the construction of housing, including those supporting government functions related to the building and development process, such as inspections, permitting and plan review services that can be modified to protect the public health, but fundamentally should continue and serve the construction of housing (e.g., allow qualified private third-party inspections in case of government shutdown).

HYGIENE PRODUCTS AND SERVICES

- Workers who produce hygiene products.
- Workers in laundromats, laundry services, and dry cleaners.
- Workers providing personal and household goods repair and maintenance.
- Workers providing disinfection services, for all essential facilities and modes of transportation, and supporting the sanitation of all food manufacturing processes and operations from wholesale to retail.
- Workers necessary for the installation, maintenance, distribution, and manufacturing of water and space heating equipment and its components.
- Support required for continuity of services, including commercial disinfectant services, janitorial/cleaning personnel, and support personnel functions that need freedom of movement to access facilities in support of front-line employees.

CONNECT WITH US

www.clsa.gov

For more information,
email CISA.CAT@clsa.dhs.gov



[Linkedin.com/company/cybersecurity-and-infrastructure-security-agency](https://www.linkedin.com/company/cybersecurity-and-infrastructure-security-agency)



[@CISAgov](https://twitter.com/CISAgov) | [@cyber](https://twitter.com/cyber) | [@uscrt_gov](https://twitter.com/uscrt_gov)



[Facebook.com/CISA](https://www.facebook.com/CISA)